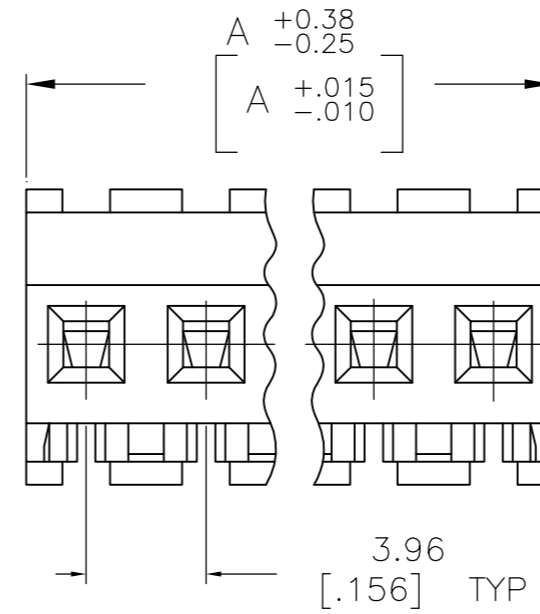
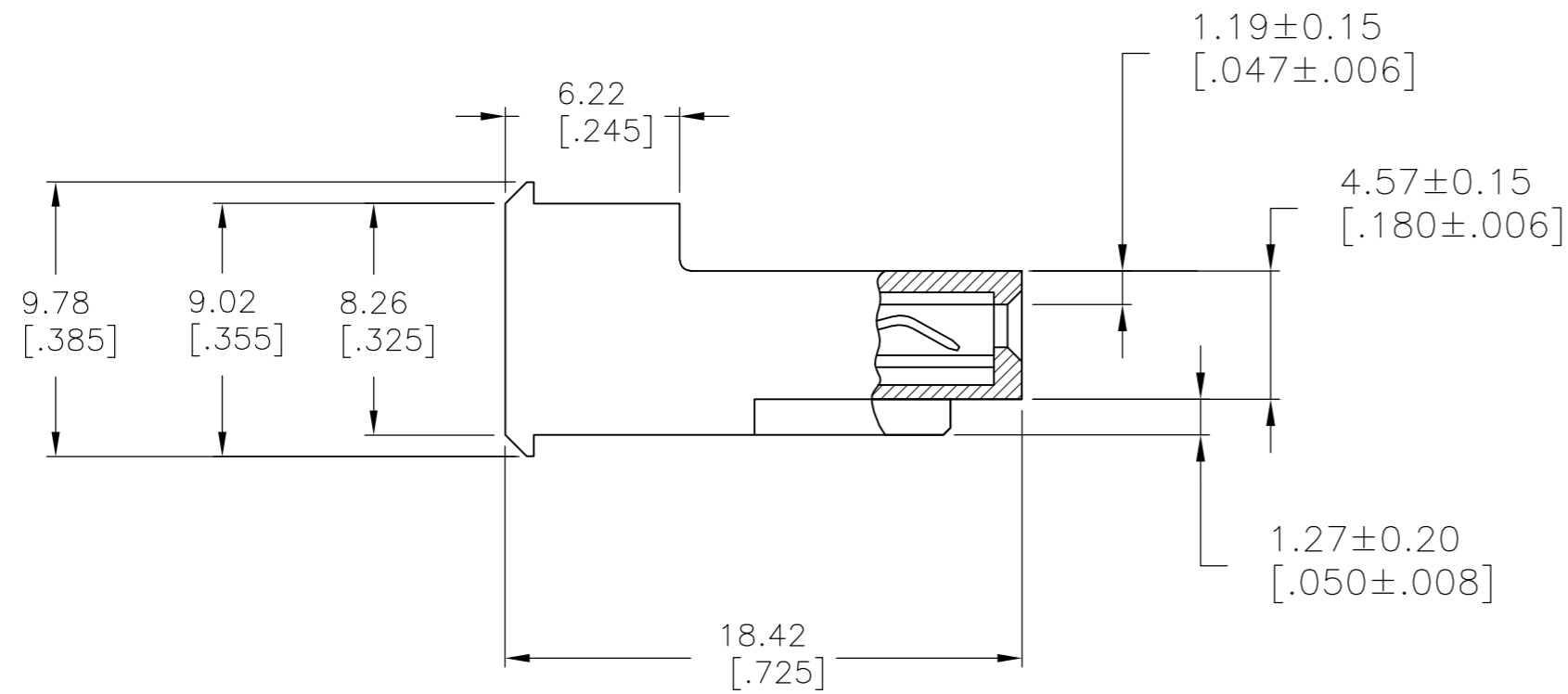
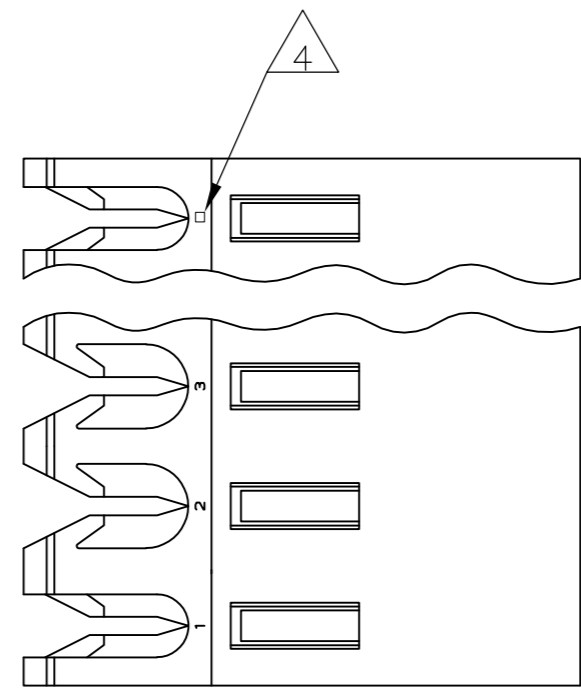


THIS DRAWING IS UNPUBLISHED. RELEASED FOR PUBLICATION  
 © COPYRIGHT BY TYCO ELECTRONICS CORPORATION. ALL RIGHTS RESERVED.

LOC	DIST	REVISIONS			
P	LTR	DESCRIPTION	DATE	DWN	APVD
CM	54	U	ECO-07-012861	08JUN07	KW DB



95.10 [3.744]	24	5-640606-4
91.14 [3.588]	23	5-640606-3
87.17 [3.432]	22	5-640606-2
83.21 [3.276]	21	5-640606-1
79.25 [3.120]	20	5-640606-0
75.29 [2.964]	19	4-640606-9
71.32 [2.808]	18	4-640606-8
67.36 [2.652]	17	4-640606-7
63.40 [2.496]	16	4-640606-6
59.44 [2.340]	15	4-640606-5
55.47 [2.184]	14	4-640606-4
51.51 [2.028]	13	4-640606-3
47.55 [1.872]	12	4-640606-2
43.59 [1.716]	11	4-640606-1
39.62 [1.560]	10	4-640606-0
35.66 [1.404]	9	3-640606-9
31.70 [1.248]	8	3-640606-8
27.74 [1.092]	7	3-640606-7
23.77 [.936]	6	3-640606-6
19.81 [.780]	5	3-640606-5
15.85 [.624]	4	3-640606-4
11.89 [.468]	3	3-640606-3
7.92 [.312]	2	3-640606-2
95.10 [3.744]	24	2-640606-4
91.14 [3.588]	23	2-640606-3
87.17 [3.432]	22	2-640606-2
83.21 [3.276]	21	2-640606-1
79.25 [3.120]	20	2-640606-0
75.29 [2.964]	19	1-640606-9
71.32 [2.808]	18	1-640606-8
67.36 [2.652]	17	1-640606-7
63.40 [2.496]	16	1-640606-6
59.44 [2.340]	15	1-640606-5
55.47 [2.184]	14	1-640606-4
51.51 [2.028]	13	1-640606-3
47.55 [1.872]	12	1-640606-2
43.59 [1.716]	11	1-640606-1
39.62 [1.560]	10	1-640606-0
35.66 [1.404]	9	640606-9
31.70 [1.248]	8	640606-8
27.74 [1.092]	7	640606-7
23.77 [.936]	6	640606-6
19.81 [.780]	5	640606-5
15.85 [.624]	4	640606-4
11.89 [.468]	3	640606-3
7.92 [.312]	2	640606-2
DIM A	NO OF CIRCUITS	PART NO

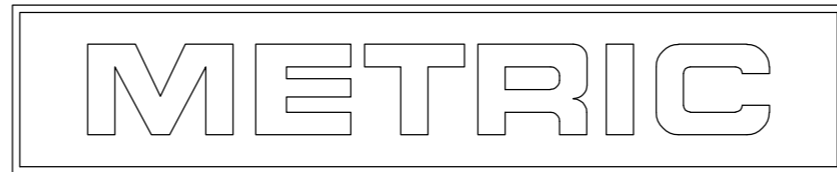
1 MATERIAL: CONNECTOR - NYLON UL94V-2 (RED)  
 CONTACTS - 0.30[.012] THICK COPPER ALLOY  
 (BRIGHT TIN-LEAD 0.00203[.000080] MIN. THICK  
 FOR CONTACTS 640606-2 THRU 2-640606-4)  
 (MATTE WHISKER MITIGATED TIN 0.00203[.000080] MIN  
 THICKNESS OVER NICKEL UNDERPLATE FOR 3-640606-2  
 THRU 5-640606-4).

2 CONTACTS ACCEPT 22 AWG WIRE WITH 2.41[.095] MAX INSULATION DIAMETER.  
 3 CONTACTS MUST ACCEPT 1.14±0.03[.045±.001] SQUARE POST AND REMAIN LOCKED IN POSITION.

4 IDENTIFICATION NUMBER FOR LAST CIRCUIT MAY NOT APPEAR ON ALL ASSEMBLIES.

5 DIMENSIONS IN BRACKETS ARE IN INCHES.

6 HOUSING FEATURES ARE: FEED-THRU WITHOUT LOCKING RAMP.



THIS DRAWING IS A CONTROLLED DOCUMENT.		DWN B. LEWIS 12FEB91	Tyco Electronics Corporation Harrisburg, Pa 17105-3608	
DIMENSIONS: mm [INCHES]		CHK R. SWING 12FEB91	Tyco Electronics Corporation	
TOLERANCES UNLESS OTHERWISE SPECIFIED:		APVD D. CLARK 19FEB91	NAME MTA-156 CONNECTOR ASSEMBLY, 22 AWG, STANDARD	
0 PLC ± - 1 PLC ± - 2 PLC ± - 3 PLC ± 0.13 [.005] 4 PLC ± -		PRODUCT SPEC 108-1051	RESTRICTED TO	
MATERIAL		APPLICATION SPEC 114-1020	SIZE A2	CAGE CODE 00779
FINISH		WEIGHT -	DRAWING NO C=640606	SCALE 4:1
1		CUSTOMER DRAWING		SHEET 1 OF 1
1		REV U		